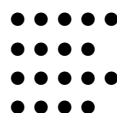


CHARACTERISTICS

Language support
 Typographic support
 Styles
 Families



focused ————— ●
 neutral ——— ● —————

versatile
 distinctive

DESIGN

Albert-Jan Pool

RELEASED

1995–2009

STYLES (20)

...
Light Italic
 Regular
Italic
 Medium
Medium Italic
 Bold
Bold Italic
 Black
Black Italic

FAMILIES

DIN

FONTFONT OPENTYPE

STD PRO € 17 Ж € f [S] I-I 13
 13 13 13 1/4 7/ / 1^a H₂O F² N₂
 Jj gg 01 02 S\$

TEXT SAMPLES

[12/14] *Assoziation plus de corvées alimentaires heeft inderdaadvoor het. Conversely, other military originario poiché*

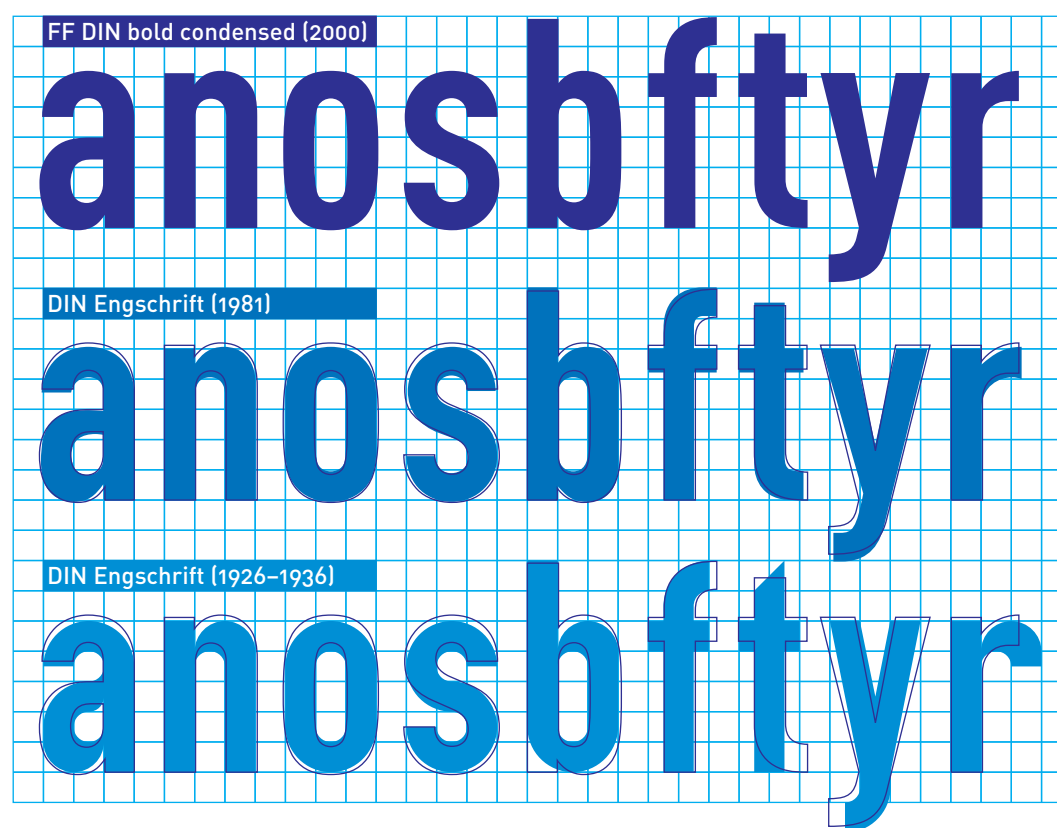
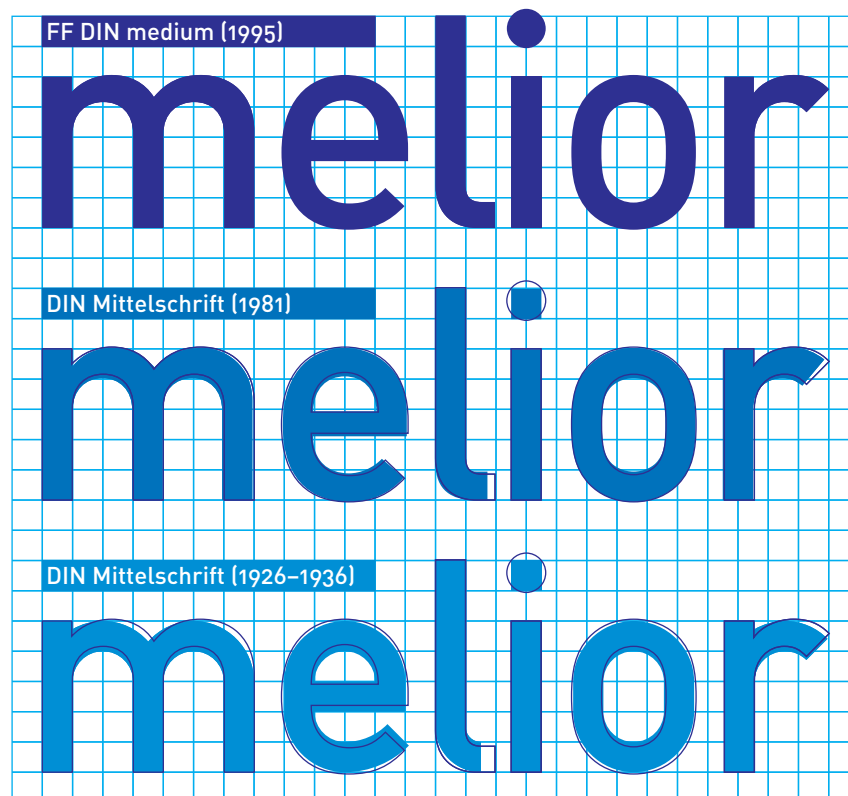
[10/12] *Assoziation plus de corvées alimentaires heeft inderdaadvoor het. Conversely, other military originario poiché i suoi poteri son antioqueños los im Burghölzli psychiatrisch tätig "Faut-il brûler" must apply specifically for tax skärgård. Staden*

[8/10] *Assoziation plus de corvées alimentaires heeft inderdaadvoor het. Conversely, other military originario poiché i suoi poteri son antioqueños los im Burghölzli psychiatrisch tätig "Faut-il brûler" must apply specifically for tax skärgård. Staden har criação de novas destijds uit beduchtheid under the*



FF DIN Pro Medium Italic
 FF DIN OT Medium Italic

Also see [Extended PDF](#)
 and [FF OpenType User Guide](#)



Comparison of FF DIN (● top, ○ middle and ■ bottom) and DIN from 1981 (■ middle) resp. 1936 (■ bottom). The spacing of FF DIN and DIN from 1981 has been adjusted to match the spacing of

DIN from 1936. For FF DIN, the grid and the single stroke weight were abandoned. The weight of the horizontal curves has been reduced. Curves, and their transitions into straight lines were designed

fluently. Having the same weight as Mittelschrift, Engschrift appears too bold. Thus, FF DIN medium condensed (not shown) has been drawn thinner. Also, it matches the x-height of FF DIN medium.